

# Pwyllgor Datblygu Polisi Addysg a Sgiliau - Dysgwyr Bregus

## Education and Skills Policy Development Committee - Vulnerable Learners

15 September 2021 / Medi 15 2021



Cyngor **Abertawe**  
**Swansea** Council

## Cymhwysedd prydau ysgol am ddim (PYDd) ar gyfer disgyblion oed statudol

Ffynhonnell: Cyfrifiad Ysgolion Blynyddol ar Lefel Disgyblion (CYBLD) - cyfrifiad ysgol ym mis Ionawr bob blwyddyn (Ebrill ar gyfer 2021)

| Blwyddyn | Nifer y                |                            |
|----------|------------------------|----------------------------|
|          | disgyblion sy'n gymwys | % y disgyblion sy'n gymwys |
| 2012     | 5741                   | 21.3%                      |
| 2013     | 5716                   | 20.9%                      |
| 2014     | 5696                   | 20.7%                      |
| 2015     | 5497                   | 19.9%                      |
| 2016     | 5378                   | 19.3%                      |
| 2017     | 5474                   | 19.4%                      |
| 2018     | 5496                   | 19.3%                      |
| 2019     | 6079                   | 21.2%                      |
| 2020     | 6224                   | 21.7%                      |
| 2021     | 6771                   | 23.6%                      |

*O fis Ebrill 2019, cyflwynodd y llywodraeth hawl i PYDd a ddiogelir. Mae hyn yn golygu bod gan unrhyw blant sy'n gymwys i gael PYDd ers 1 Ebrill 2019 hawl i PYDd a ddiogelir tan ddiwedd 2023, hyd yn oed lle mae cymhwysedd gwirioneddol wedi dod i ben. Mae'r ffigurau yn y tabl isod yn dangos y rheini sy'n gymwys i gael PYDd yn unig, ac nid y rheini â hawl i PYDd a ddiogelir yn unig.*

# Free School Meals Eligibility (eFSM) for Statutory Age Pupils

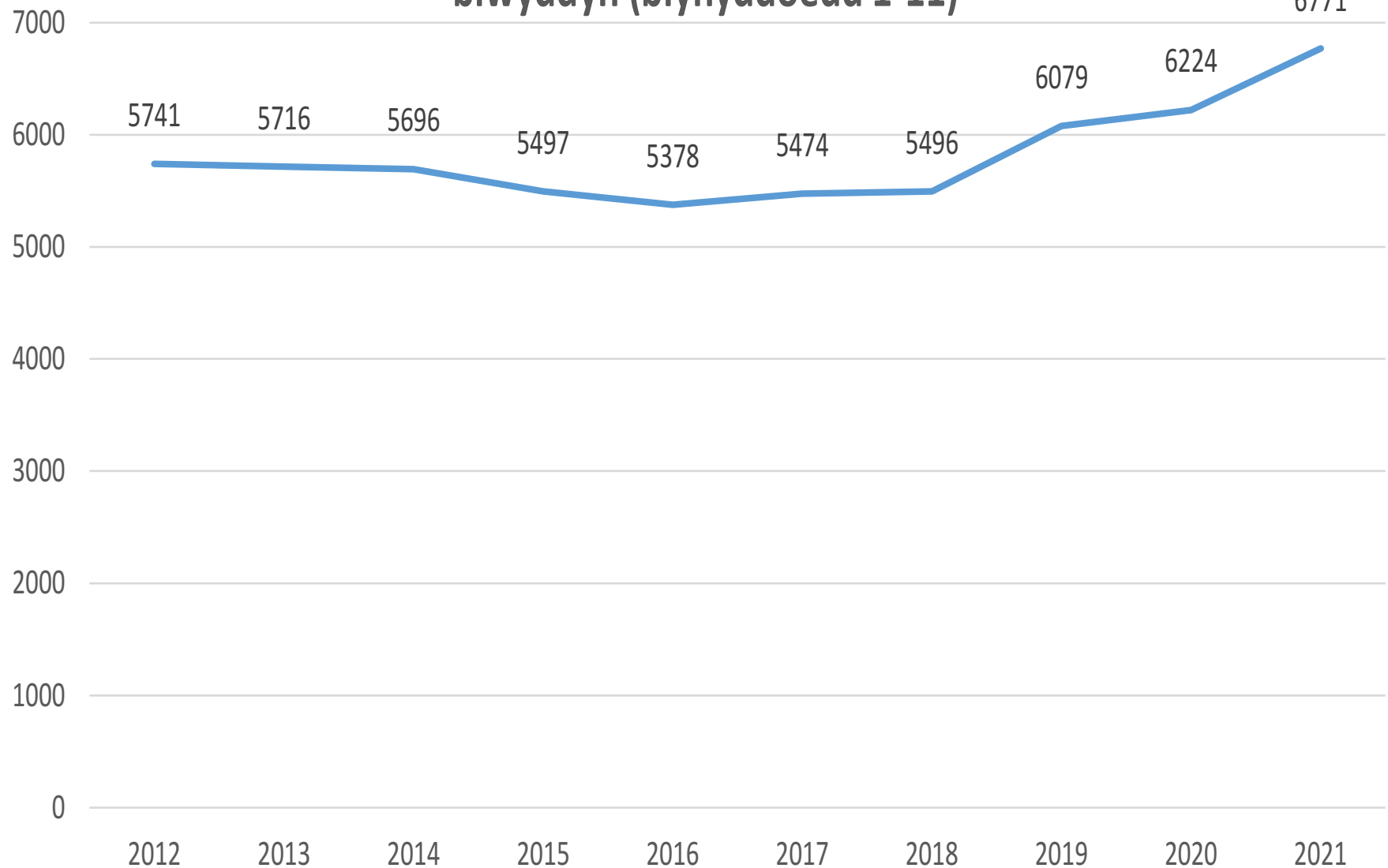
Source: PLASC school census in January each year (April for 2021)

| Year | No. eligible | % eligible |
|------|--------------|------------|
| 2012 | 5741         | 21.3%      |
| 2013 | 5716         | 20.9%      |
| 2014 | 5696         | 20.7%      |
| 2015 | 5497         | 19.9%      |
| 2016 | 5378         | 19.3%      |
| 2017 | 5474         | 19.4%      |
| 2018 | 5496         | 19.3%      |
| 2019 | 6079         | 21.2%      |
| 2020 | 6224         | 21.7%      |
| 2021 | 6771         | 23.6%      |

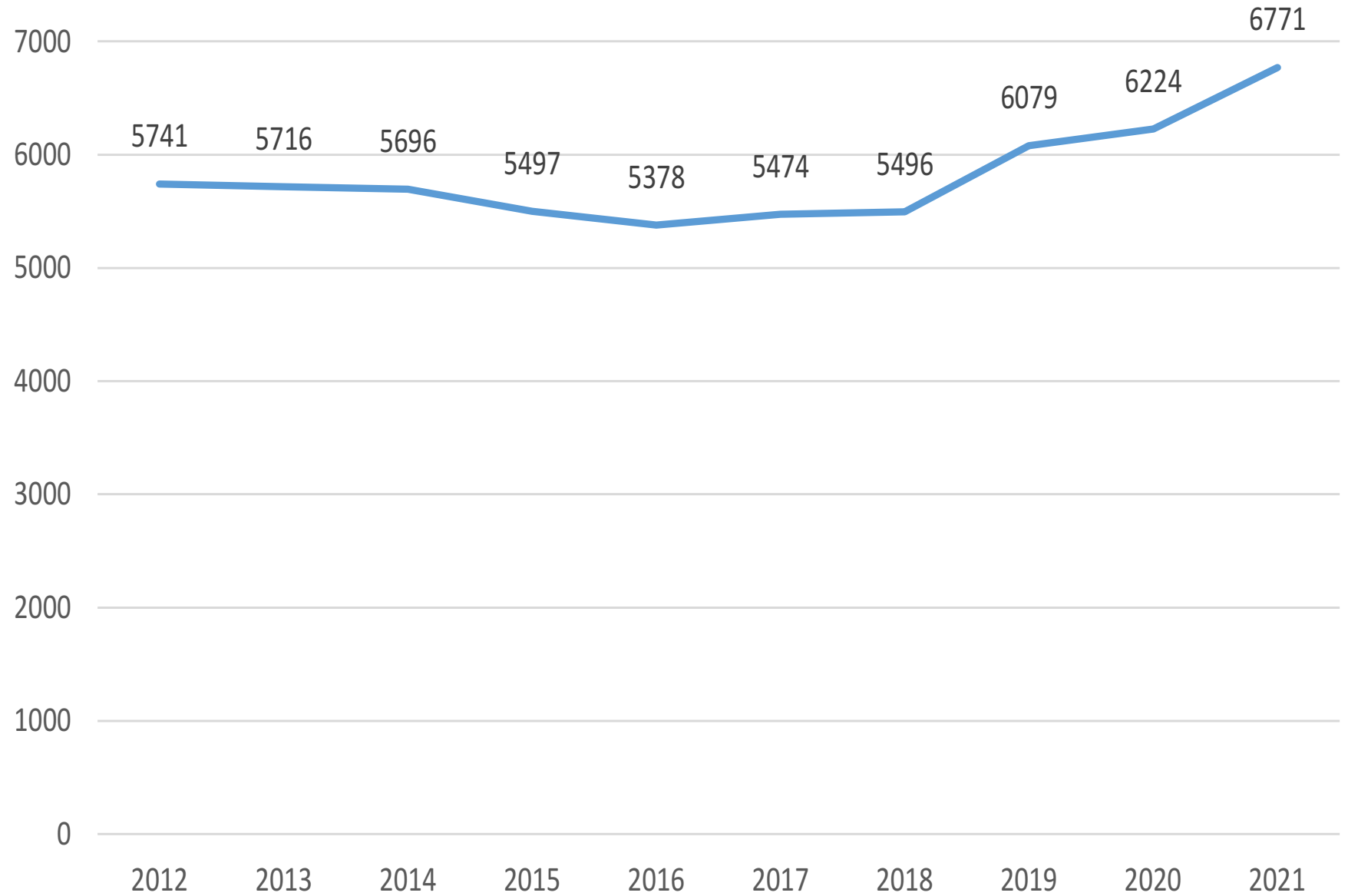
*From April 2019, the Government introduced transitionally protected FSM.*

*This means that any children eligible for FSM since 1st April 2019 have protected FSM until the end of 2023, even where true eligibility has ceased. The figures in the table show only those who are eligible for FSM, and not those who have only protected FSM.*

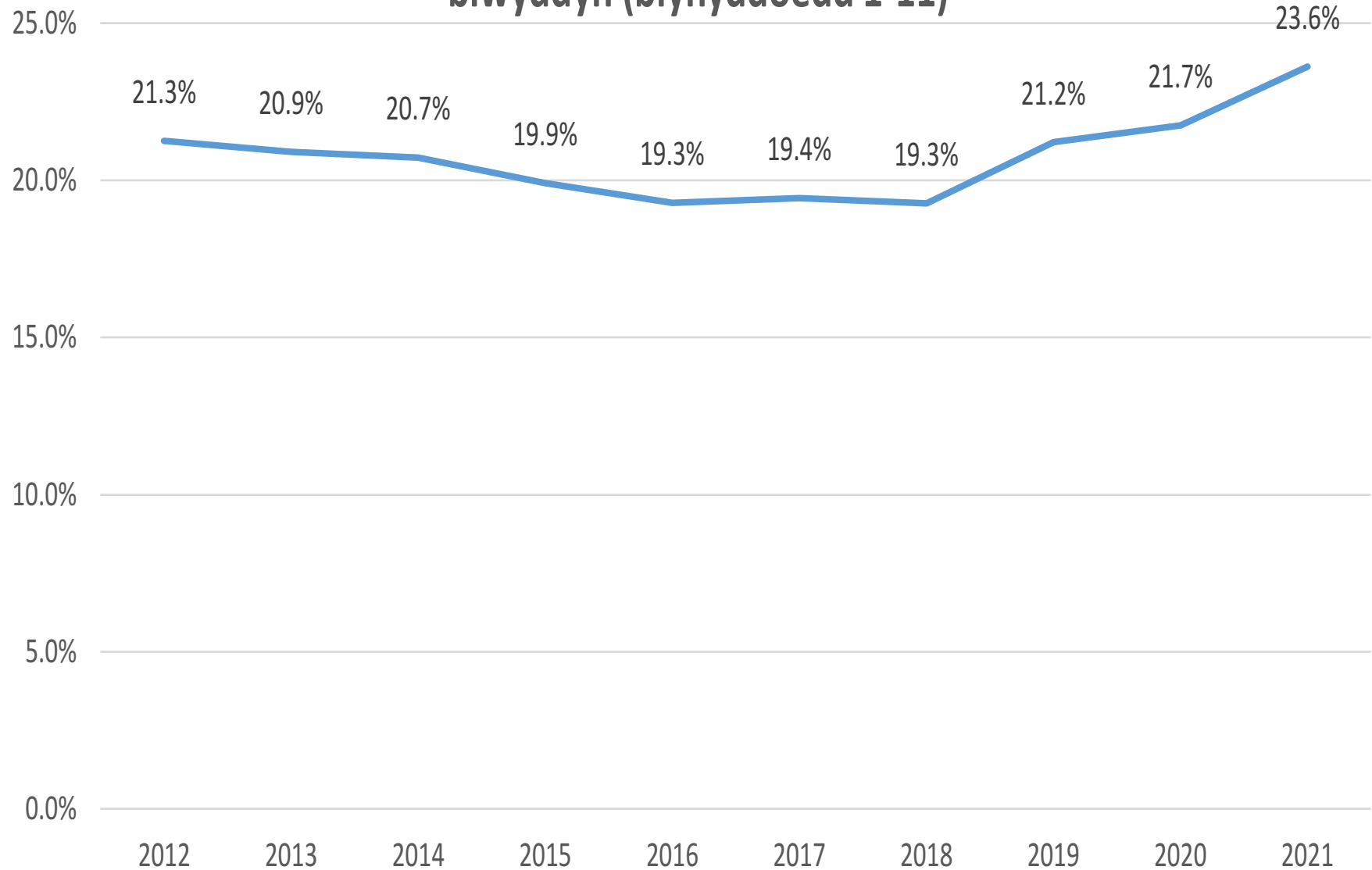
## Nifer y disgyblion sy'n gymwys am PYDd mewn CYBLD bob blwyddyn (blynyddoedd 1-11)



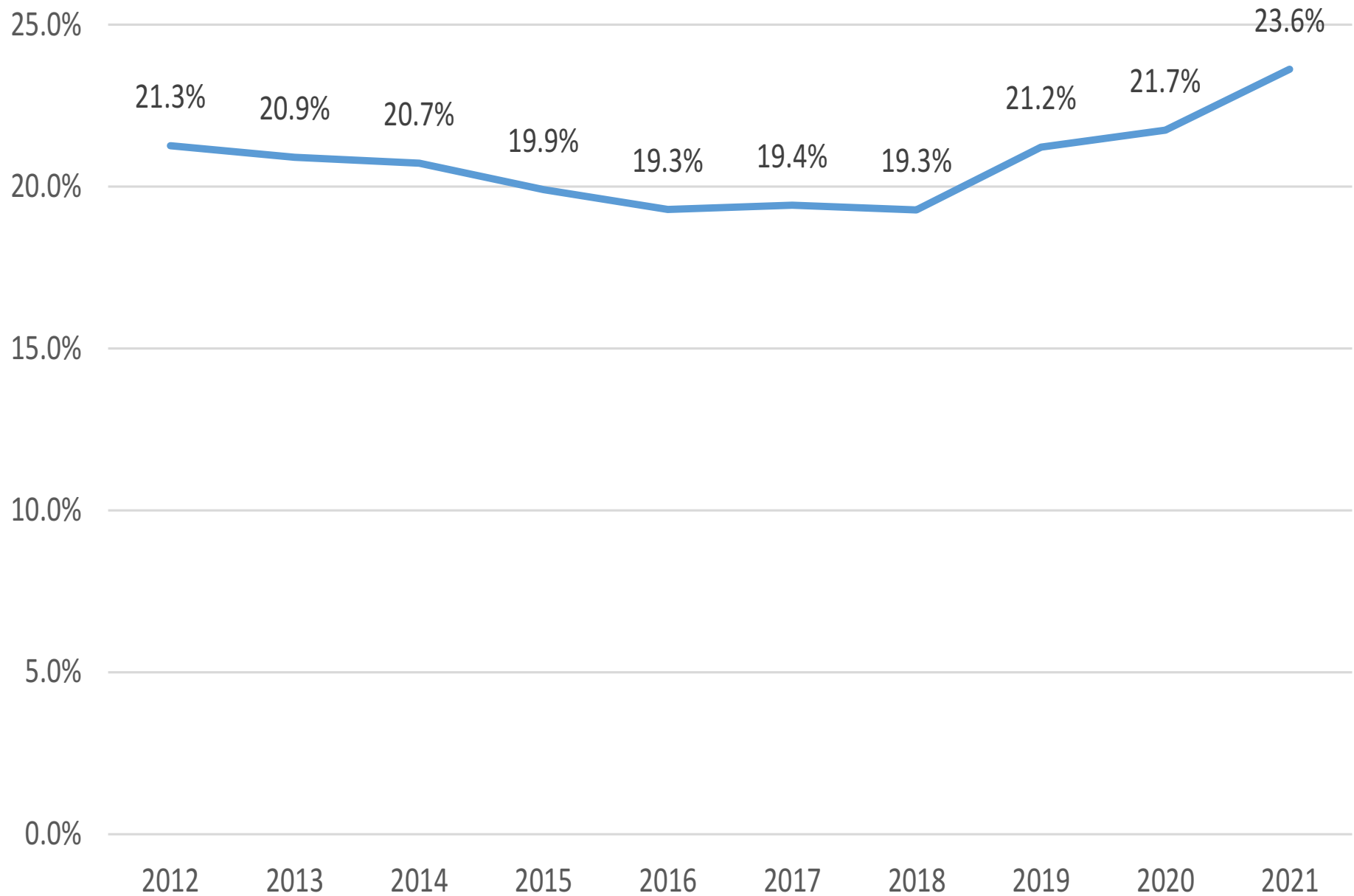
## Number eligible for FSM in PLASC each year (years 1-11)



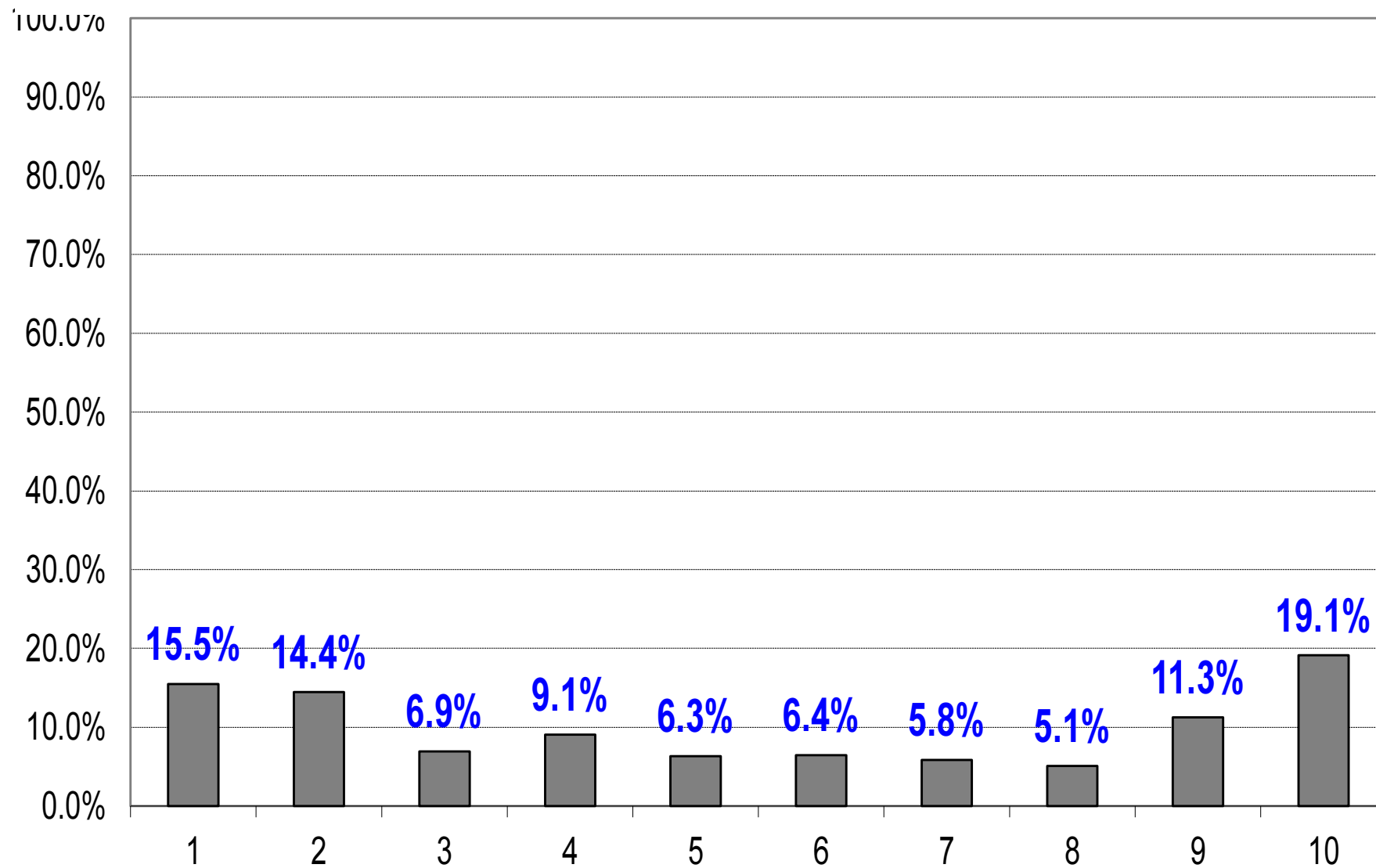
## Canran y disgyblion sy'n gymwys am PYDd mewn CYBLD bob blwyddyn (blynyddoedd 1-11)



## Percentage eligible for FSM in PLASC each year (years 1-11)



## Canran y disgyblion fesul degradd Mynegai Amddifadedd Lluosog Cymru 2021

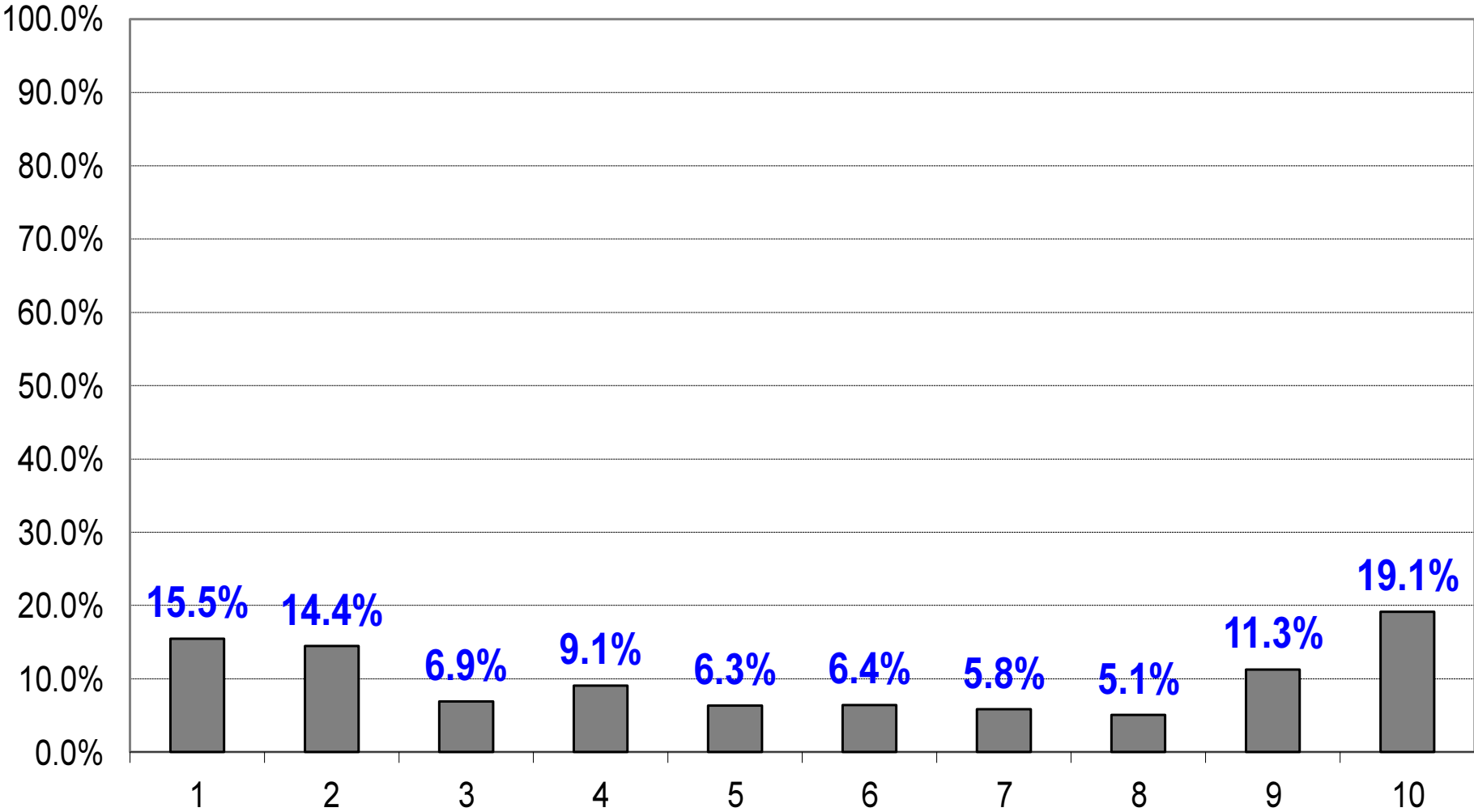




# PLASC April 2021 : Pupil Distribution by Decile of the Welsh Index of Multiple Deprivation

Decile 1 = most deprived 10% of areas in Wales; decile 10 = least deprived 10% of all areas in Wales.

## Percentage of Pupils per WIMD Decile 2021



## Proffiliau Asesu Bod yn Agored i Niwed (PABAN) 2019

### Pwyntiau Allweddol

Mae'r sgôr PABAN cyfartalog yn uwch ar gyfer bechgyn - 4.3 o'i gymharu â 3.6 ar gyfer merched.

Mae sgoriau PABAN cyfartalog yn debyg ar gyfer pob grŵp, er ychydig yn uwch ar gyfer blynyddoedd 9 i 11.

Mae gan ddisgyblion ag ADY sgoriau PABAN llawer uwch na'r rheini heb ADY (ond mae ADY yn rhan o fformiwla PABAN).

Mae gan ddisgyblion sy'n gymwys i gael prydau ysgol am ddim sgoriau PABAN llawer uwch - 8.0 ar gyfartaledd o'i chymharu â 2.9 ar gyfer disgyblion nad ydynt yn derbyn prydau ysgol.

Mae cydberthynas gref rhwng sgoriau cyfartalog PABAN a Mynegai Amddifadedd Lluosog Cymru - mae gan ddisgyblion sy'n byw yn y 10% o'r ardaloedd mwyaf difreintiedig sgôr gyfartalog o 6.9 o'i chymharu ag 1.6 ar gyfer y rheini sy'n byw yn y 10% lleiaf difreintiedig.

Mae gan blant sy'n derbyn gofal sgoriau PABAN sydd bron deirgwaith y sgoriau ar gyfer plant nad ydynt yn derbyn gofal.

Mae gan ddisgyblion â sgoriau darllen sy'n is na 93 yn y profion darllen cenedlaethol sgoriau PABAN cyfartalog uwch na'r rheini sy'n uwch na 93.

Mae gan ddisgyblion â sgoriau rhifedd sy'n is na 97 yn y profion darllen cenedlaethol sgoriau PABAN cyfartalog uwch na'r rheini sy'n uwch na 97.

# Vulnerability Assessment Profiles (VAP) 2019

## Key Points

The average VAP score is higher for boys - 4.3 compared to 3.6 for girls.

Average VAP scores are similar for each year group, although slightly higher for years 9 to 11.

Pupils with ALN have much higher VAP scores than those with no ALN (but ALN is part of the VAP formula).

Pupils eligible for free school meals have much higher VAP scores - 8.0 average compared to 2.9 for non-FSM.

There is a strong correlation between VAP average scores and the Welsh Index of Multiple Deprivation - pupils who live in the 10% most deprived areas have an average score of 6.9 areas compared to 1.6 for those living in the 10% least deprived.

Looked after children have VAP scores nearly three times those for non looked after.

Pupils with reading scores below 93 on the national reading tests have higher average VAP scores than those above 93.

Pupils with numeracy scores below 97 on the national numeracy tests have higher average VAP scores than those above 97.

## Sgoriau PABAN cyfartalog fesul Ward (sgoriau uwch = mwy agored i niwed)

Mae gan yr wardiau sydd wedi'u hamlygu'n binc sgoriau cyfartalog sy'n uwch na chyfartaledd y sir.

| Ward         | Sgôr PABAN cyfartalog |
|--------------|-----------------------|
| Townhill     | 7.2                   |
| Penderry     | 7.0                   |
| Bonymaen     | 6.2                   |
| Landore      | 5.9                   |
| Castle       | 5.1                   |
| Mynyddbach   | 5.1                   |
| Clydach      | 4.8                   |
| St. Thomas   | 4.7                   |
| Cockett      | 4.2                   |
| Morrison     | 4.1                   |
| Penyrheol    | 4.0                   |
| Cwmbwrla     | 4.0                   |
| Gorseinon    | 3.8                   |
| Pontardulais | 3.7                   |
| Llansamlet   | 3.5                   |
| West Cross   | 3.2                   |
| Mawr         | 3.1                   |
| Penllergaer  | 2.9                   |
| Uplands      | 2.5                   |

| Ward            | Sgôr PABAN cyfartalog |
|-----------------|-----------------------|
| Upper Loughor   | 2.5                   |
| Kingsbridge     | 2.3                   |
| Penclawdd       | 2.1                   |
| Gowerton        | 2.1                   |
| Killay South    | 2.1                   |
| Sketty          | 2.1                   |
| Killay          | 2.0                   |
| Dunvant         | 1.9                   |
| Fairwood        | 1.9                   |
| Gower           | 1.7                   |
| Oystermouth     | 1.7                   |
| Killay North    | 1.6                   |
| Llangyfelach    | 1.6                   |
| Mayals          | 1.5                   |
| Pennard         | 1.5                   |
| Newton          | 1.2                   |
| Bishopston      | 1.1                   |
| <b>Abertawe</b> | <b>4.0</b>            |

## Average VAP scores by Ward (higher scores = higher vulnerability)

Wards highlighted in pink have average scores above the county average.

| Ward         | Average VAP Score |
|--------------|-------------------|
| Townhill     | 7.2               |
| Penderry     | 7.0               |
| Bonymaen     | 6.2               |
| Landore      | 5.9               |
| Castle       | 5.1               |
| Mynyddbach   | 5.1               |
| Clydach      | 4.8               |
| St. Thomas   | 4.7               |
| Cockett      | 4.2               |
| Morrison     | 4.1               |
| Penyrheol    | 4.0               |
| Cwmbwrla     | 4.0               |
| Gorseinon    | 3.8               |
| Pontardulais | 3.7               |
| Llansamlet   | 3.5               |
| West Cross   | 3.2               |
| Mawr         | 3.1               |
| Penllergaer  | 2.9               |
| Uplands      | 2.5               |

| Ward           | Average VAP Score |
|----------------|-------------------|
| Upper Loughor  | 2.5               |
| Kingsbridge    | 2.3               |
| Penclawdd      | 2.1               |
| Gowerton       | 2.1               |
| Killay South   | 2.1               |
| Sketty         | 2.1               |
| Killay         | 2.0               |
| Dunvant        | 1.9               |
| Fairwood       | 1.9               |
| Gower          | 1.7               |
| Oystermouth    | 1.7               |
| Killay North   | 1.6               |
| Llangyfelach   | 1.6               |
| Mayals         | 1.5               |
| Pennard        | 1.5               |
| Newton         | 1.2               |
| Bishopston     | 1.1               |
| <b>Swansea</b> | <b>4.0</b>        |

## CYBLD mis Ebrill 2021

Canran y disgyblion sy'n gymwys i gael prydau ysgol am ddim o'i chymharu â darpariaeth ADY.

| Grŵp ADY                      | % cPYDd |
|-------------------------------|---------|
| Dim -ADY                      | 16.1%   |
| Gweithredu gan yr ysgol       | 34.0%   |
| Gweithredu gan yr ysgol a mwy | 37.3%   |
| Plentyn â datganiad           | 39.5%   |

# PLASC April 2021

## Percentages of pupils eligible for free meals compared to ALN provision

| <b>ALN group</b>   | <b>% eFSM</b> |
|--------------------|---------------|
| Non-ALN            | 16.1%         |
| School action      | 34.0%         |
| School action plus | 37.3%         |
| Statemented        | 39.5%         |

# Nifer y gwaharddiadau bob blwyddyn

Ffynhonnell: system Capita ONE

| Blwyddyn | Cyfnod penodol | Parhaol |
|----------|----------------|---------|
| 2011/12  | 895            | 6       |
| 2012/13  | 774            | 5       |
| 2013/14  | 827            | 6       |
| 2014/15  | 597            | 8       |
| 2015/16  | 753            | 8       |
| 2016/17  | 726            | 6       |
| 2017/18  | 1003           | 17      |
| 2018/19  | 1418           | 25      |
| 2019/20  | 937            | 19      |
| 2020/21  | 774            | 7       |

*Bydd y pandemig wedi effeithio ar ffigurau 2019/20 a 2020/21*



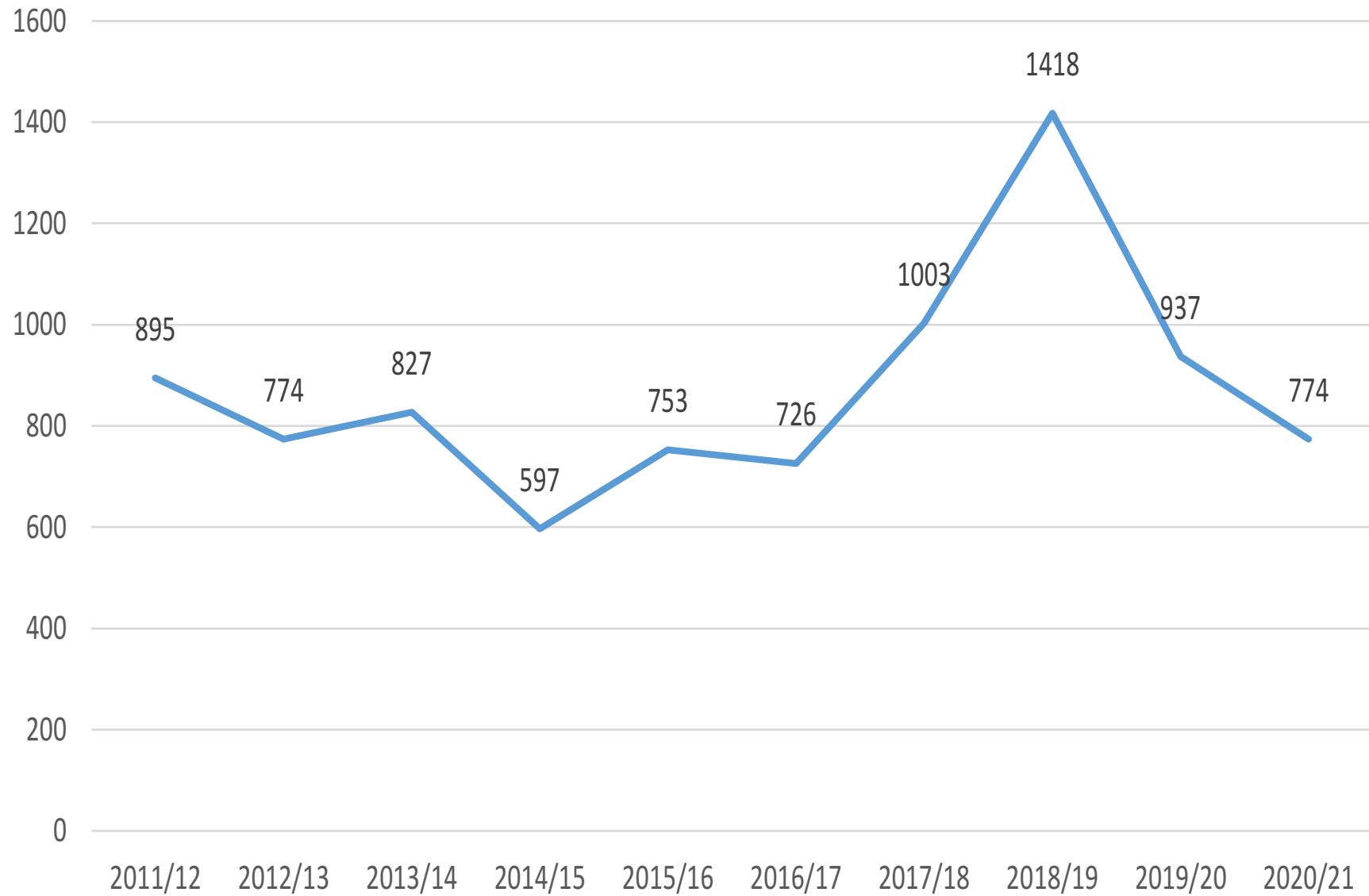
# Number of Exclusions Each Year

Source: Capita ONE system

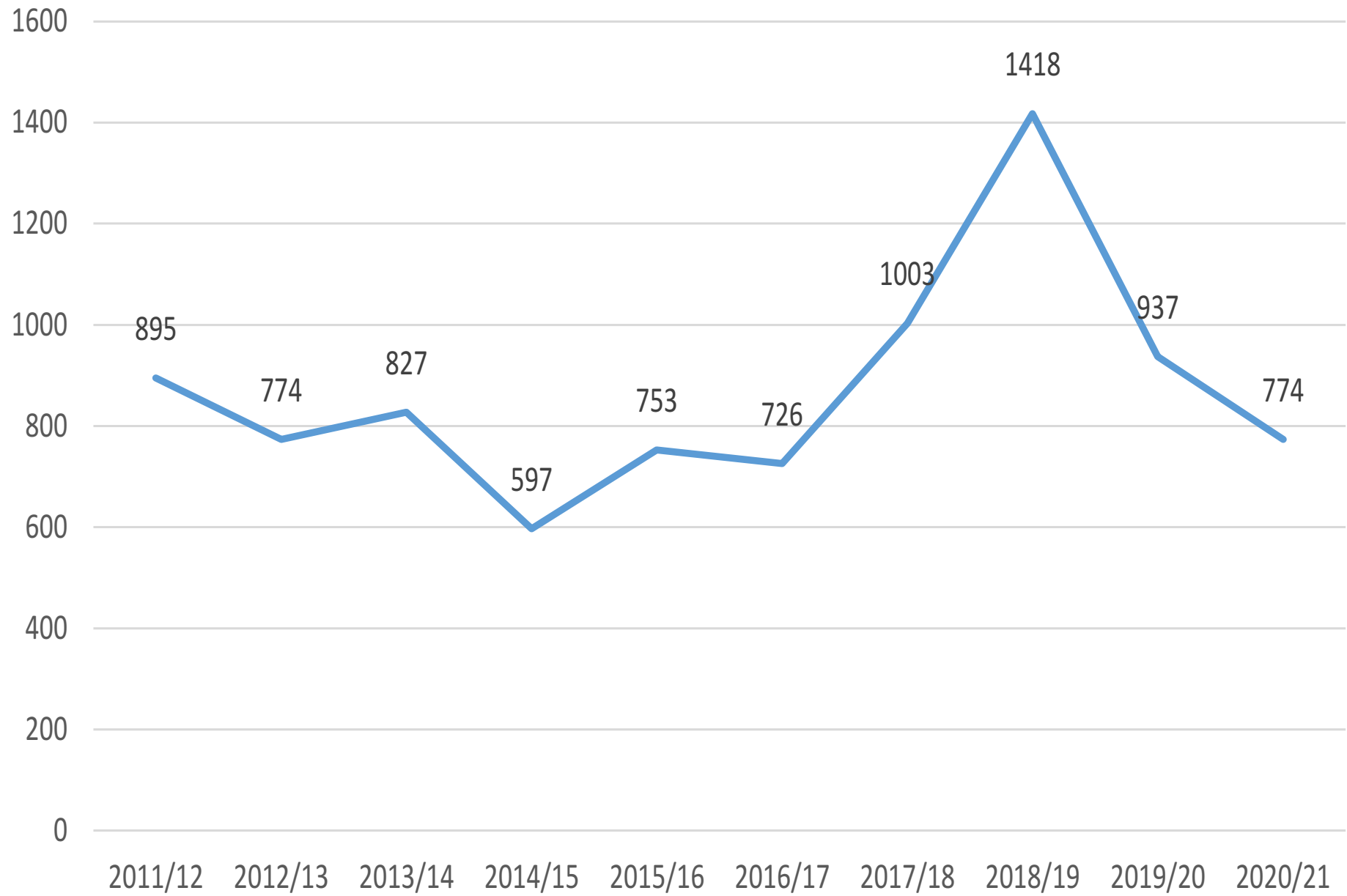
| Year    | Fixed term | Permanent |
|---------|------------|-----------|
| 2011/12 | 895        | 6         |
| 2012/13 | 774        | 5         |
| 2013/14 | 827        | 6         |
| 2014/15 | 597        | 8         |
| 2015/16 | 753        | 8         |
| 2016/17 | 726        | 6         |
| 2017/18 | 1003       | 17        |
| 2018/19 | 1418       | 25        |
| 2019/20 | 937        | 19        |
| 2020/21 | 774        | 7         |

*Figures for 2019/20 and 2020/21 will have been affected by the pandemic.*

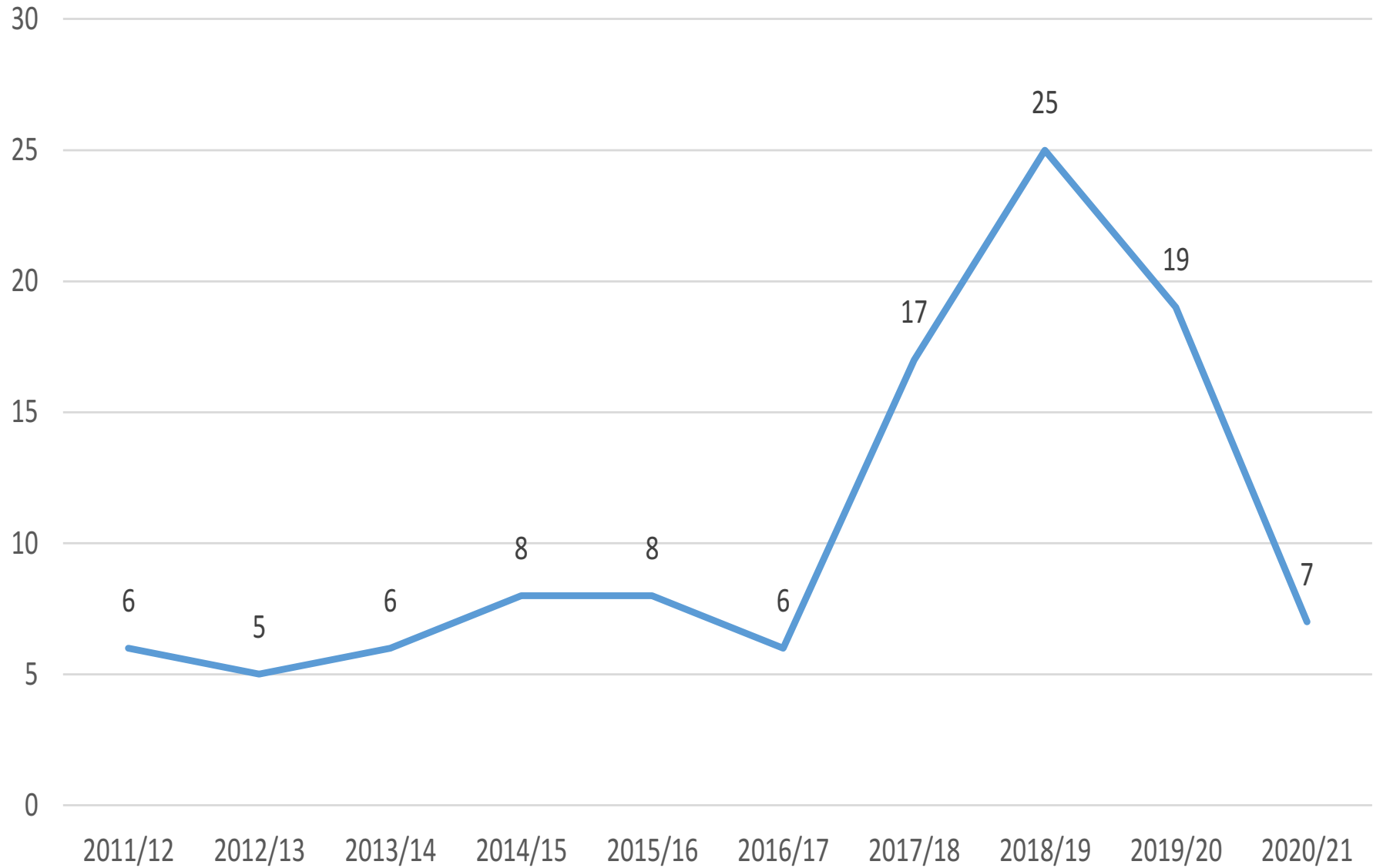
## Nifer y gwaharddiadau cyfnod penodol bob blwyddyn



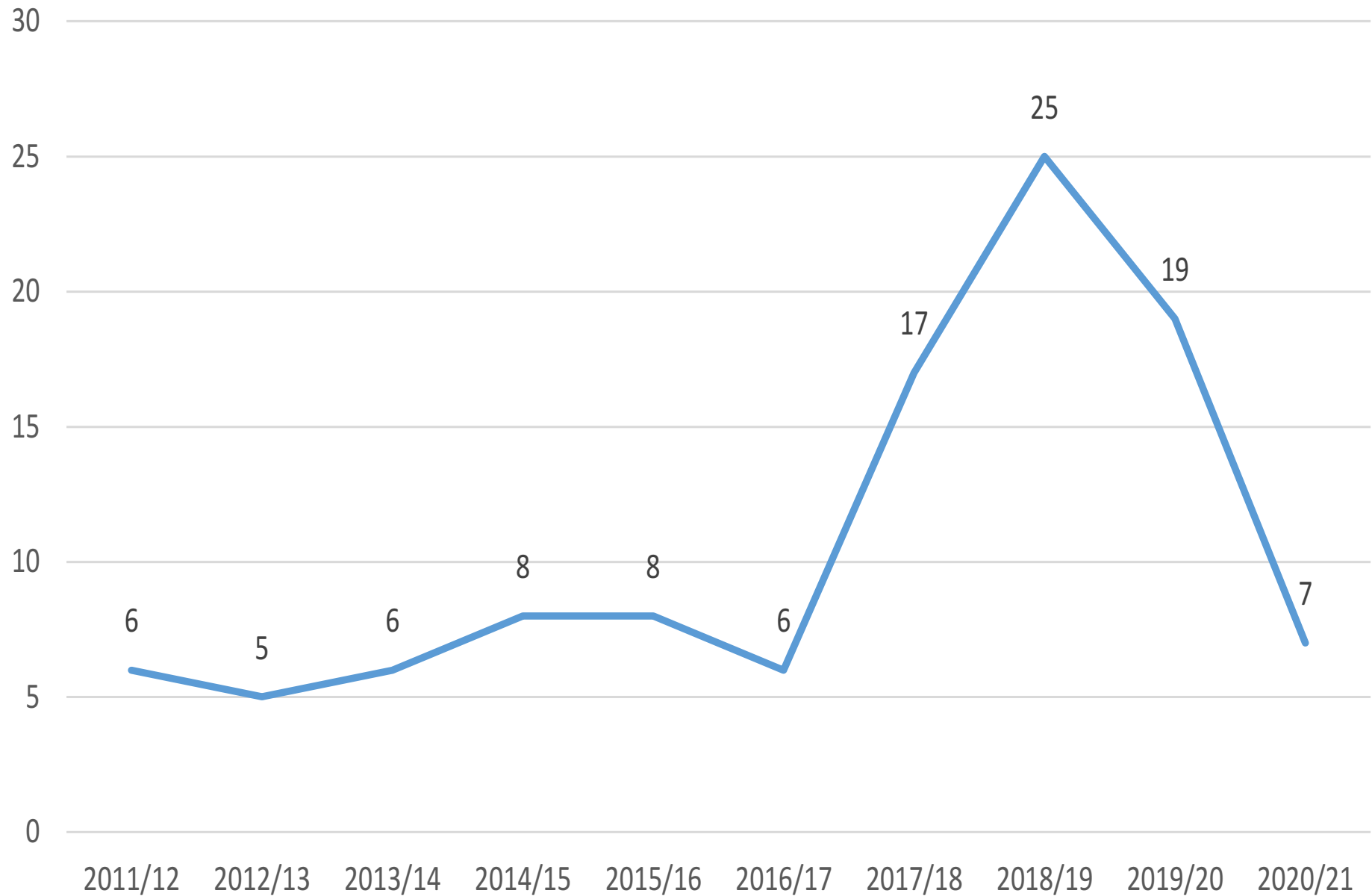
## Number of fixed-term exclusions each year



## Nifer y gwaharddiadau parhaol bob blwyddyn

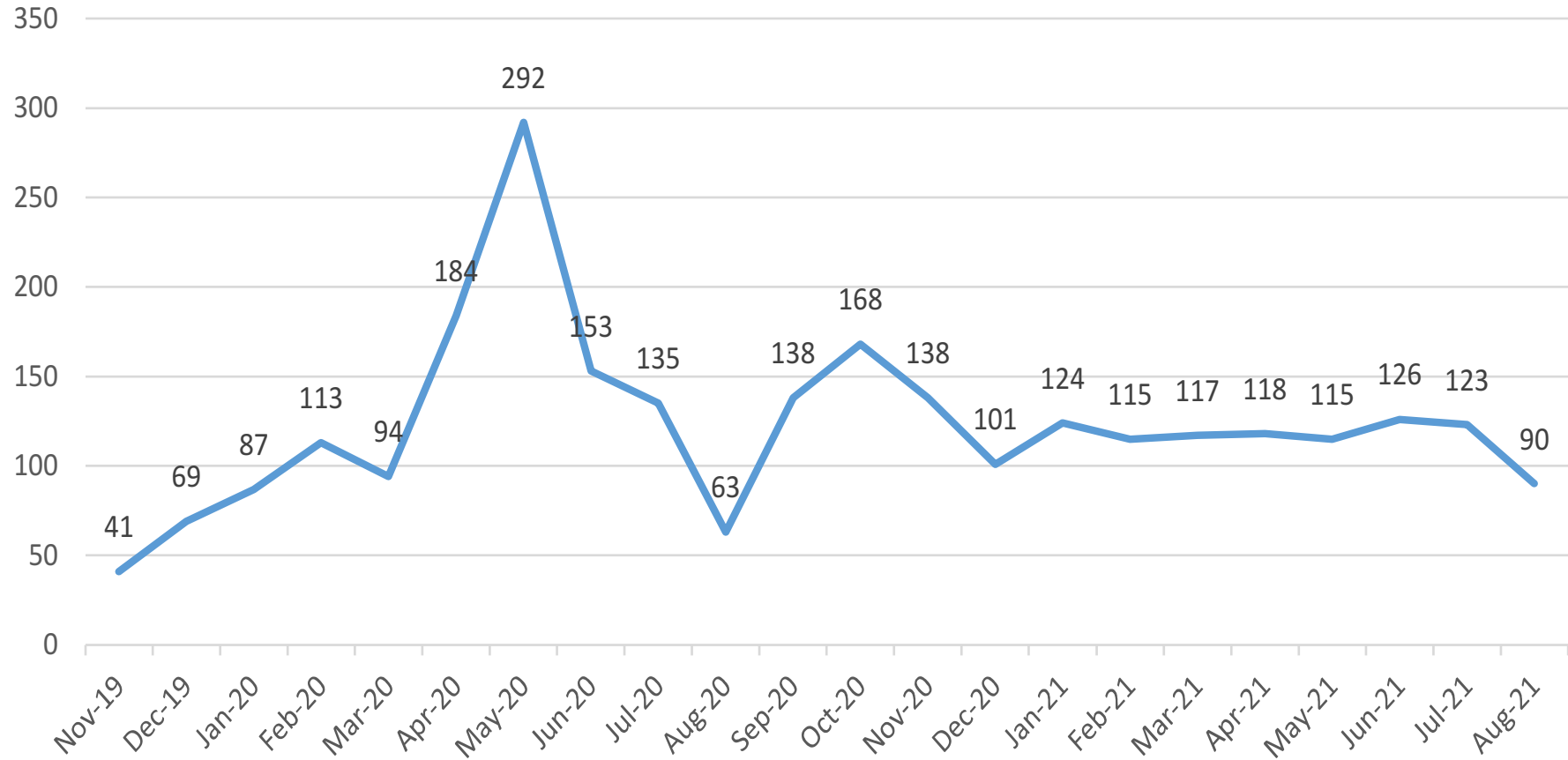


## Number of permanent exclusions each year



# Operation Encompass

## Cyfanswm y Digwyddiadau Mis Tachwedd 2019 i Orffennaf 2021



# Operation Encompass

## Total Incidents per Month November 2019 to July 2021

